

## Orchid VMS

Small business video surveillance management and recording software



ipConfigure Orchid is an IP video management and recording solution built to fit the needs of small and medium business applications. Designed to operate on a Windows or Linux based computer, NAS device or on-board Axis cameras, Orchid offers users a diverse range of options while remaining cost effective.

ipConfigure Orchid offers multi-megapixel HDTV quality video for an immersive and detailed visual experience. Recognized for its accessibility and ease of use, Orchid provides local and remote access to live and recorded events through an intuitive web browser interface, and is available as an iPhone or iPad app.

Orchid's intuitive web browser interface can be hosted by one or more devices running Windows, Linux, or on-board NAS storage devices, or Axis cameras. This cross platform flexibility adapts to your existing infrastructure, reducing IT and licensing costs.

ipConfigure Orchid supports over 2,000 IP camera models through the ONVIF Profile S specification which provides auto-discovery and remote camera configuration. Additionally, Orchid offers an advanced motion detection and recording engine that supports automatic adjustment of frame rates and rule-based recording.

Orchid's support for an on-camera installation (Axis ACAP) offers operators a low cost alternative to the traditional PC-based centralized installation. Alternatively, it may also provide a redundant recording configuration when video data integrity is required.

- HD Megapixel support
- Browser based interface
- App for iPhone, iPad
- Windows, Linux, ACAP
- ONVIF camera compatible
- Redundant edge recording

# Technical Specifications - ipConfigure Orchid VMS

## General

PC Client	Chrome, Safari, IE, Firefox on Windows and Mac
Mobile access	Apps for iPhone and iPad
Number of channels	Unlimited
Compatible products	ONVIF Profile S IP Cameras
Language	English, extensible via language SDK

## Video

Video Compression	MJPEG, MPEG-4, H.264, H.265
Resolutions	Supports all camera resolutions
Frame Rate	Supports all camera frame rates
Audio	One-way audio streaming

## Axis ACAP VMS

Storage media	SD (HC class10), NAS
Storage capacity	64 GB SD per camera

## System

Minimum requirements	OS: Windows, Linux, ACAP HW: Atom, ARM, Artpec-4, x86_64
Recommended network	100 Megabit or greater
Required equipment	PoE Switch, Ethernet Cables, PC IP Camera(s).
Security	Multiple user access levels

## Live View

Camera live view	Live view up to 32 cameras
PTZ	Control PTZ using mouse or touch

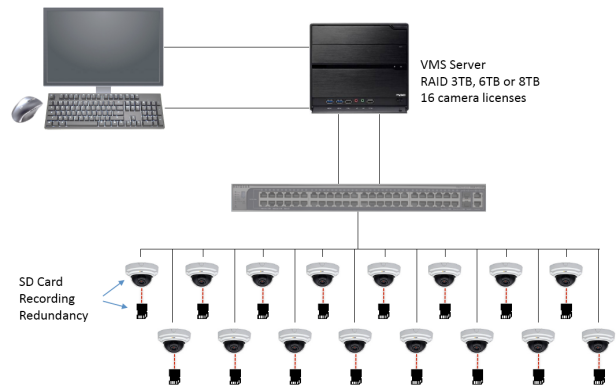
## Playback

Search for recordings	Interactive date/time fine and course timeline bar.
Playback	Speed up to 8x or by frame
Export	JPEG, ASF, MKV

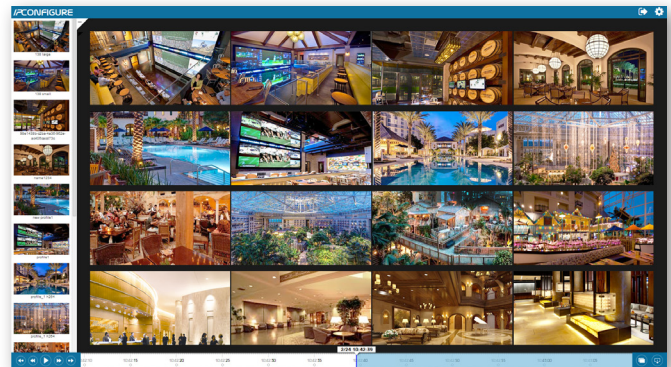
## Recording Control

Motion detection	Advanced motion detection
Continuous and scheduled recording	Schedule per camera supports continuous and motion-based rules

## System setup example



## Live view example



## Playback view example



**IPCONFIGURE**

www.ipconfigure.com

877.201.1112

sales@ipconfigure.com